



## Upcoming shows (updated)

### Monday 8 March

[Click here for more details below](#)

#### Dave Swarbrick

Support: Dana & Susan Robinson  
**PLEASE CHECK FOR LAST MINUTE AVAILABILITY\***

[Ravenswood  
Sharpthorne](#)



### Tuesday 23 March

[Click here for more details below](#)

#### 2010 BBC FOLK AWARDS BEST GROUP

#### Lau

Support: Matthew Ord

[Chequer Mead  
East Grinstead](#)



### Thursday 1 April

[Click here for more details below](#)

#### Martin Simpson

Support: Emily Slade

[Chequer Mead  
East Grinstead](#)



### Monday 26 April

[Click here for more details below](#)

#### Emily Smith

**\*SPECIAL OFFER – FREE TICKETS TO ANYONE ATTENDING DAVE SWARBRICK**

[Ravenswood  
Sharpthorne](#)



### Wednesday 26 May

Bookings 01342 302000  
[Artist's website](#)

#### Gretchen Peters

(Changed from original date of 18<sup>th</sup> May)

[Chequer Mead  
East Grinstead](#)



### Monday 14 June

Bookings 01342 302000  
[Artist's website](#)

#### Eliza Carthy (band)

[Chequer Mead  
East Grinstead](#)



Did you see 'Swarb' on Friday evening's BBC 'The One Show'? If not, you can catch it on BBC's iPlayer service [here](#)

**Monday  
8 March 2010  
8pm**

## Dave Swarbrick

at The Ravenswood  
Sharpthorne

[www.theravenswood.co.uk](http://www.theravenswood.co.uk)

Support: **Dana &  
Susan Robinson**

**ADVANCE TICKETS ONLY**  
(£13) **SUBJECT TO LAST  
MINUTE AVAILABILITY –  
SPECIAL OFFER: TICKET  
INCLUDES FREE ENTRY  
TO EMILY SMITH ON 26  
APRIL – see below.**

[Buy online via Acoustic  
Sussex website](#)



or 'book now, pay later'  
on 01342 714810 /  
716975

Dave Swarbrick first became a hero of the British folk scene as as young instrumental virtuoso in the Ian Campbell Folk Group. By 1967, he'd teamed up with Martin Carthy has a duo. This remarkable pairing played an important part in the tremendous shake up given to British folk music. When they split as a duo in 1969, 'Swarb' went off to join the finest line-up of the hugely influential Fairport Convention and his contribution to folk/rock music is legendary and well documented.

In 1984 Swarb left Fairport and, along with Kevin Dempsey, Chris Leslie and Martin Jenkins, formed Whippersnapper, a group renowned for its drive and acoustic prowess.

In 1993, Swarb moved to Australia and for the next three years he lived in the Blue Mountains. He returned to England in 1996 a period of ill health followed, with a celebrated moment in 1999 when the Daily Telegraph ran a very premature obituary while Dave was ill in hospital. With his usual good humour, he retorted, "*It's not the first time I've died in Coventry.*" Since that time, his health has continued to improved such that he was able to start performing again in 2008, both solo and with Martin Carthy, along with other collaborations and festival performances with Fairports at their annual Cropredy Festival.

*"The intensity of Swarb's fiddling ensures that sparks fly, its very occasional wheeziness only adding to the essence of spontaneity and conveying the total conviction in his music-making"* **NetRhythms**

Support is from **Dana and Susan Robinson**, described by Radio 2's Mike Harding as "Authentic, rooted and fused with great music if the past"

*"Outstanding"* **Froots**

[Click here for News Release \(PDF\)](#)



Dave Swarbrick



Dana & Susan Robinson

[BACK TO TOP](#)

**Tuesday  
23 March 2010  
8pm**

## Lau

at Chequer Mead  
East Grinstead

[www.chequermead.org.uk](http://www.chequermead.org.uk)

Support: **Matthew Ord**

£15 (£12 conc)  
Box Office 01342 302000

[Click here for News Release](#)

#### Three times winners of Best Group at the BBC Radio 2 Folk Awards

(including the 2010 awards announced on 1 February), **Lau** are a formidable trio of three of the finest and most innovative exponents of modern traditional music in Britain today. Their now infamous live shows are a must-see experience with an energy and musicianship that is spellbinding. The trio employ rising, epic song structures not usually associated with folk music; in fact, it's more akin to those on the leftfield of rock and jazz.

Highly regarded musicians in their own right, the combined talents of Kris Drever, Martin Green and Aidan O'Rourke make for a fantastic and all-conquering trio. It is no surprise they were once again triumphant at this year's BBC Folk Awards.

*"Creative and genre bursting"* \*\*\*\* **The Scotsman**



Lau

[\(PDF\)](#)

*"Lau are so special" \*\*\*\* The Guardian*

*"...quite frankly the best band in the world right now" Channel 4 Music*

Support for this show is from the brilliant guitarist and singer, **Matthew Ord**, described by Americana magazine as "stone cold classic genius... ridiculously talented".



Matthew Ord

[BACK TO TOP](#)

**Thursday  
1 April 2010  
8pm**

## Martin Simpson

at **Chequer Mead  
East Grinstead**

[www.chequermead.org.uk](http://www.chequermead.org.uk)

Support: **Emily Slade**

£15 (£12.50 conc)  
Box Office 01342 302000

[Click here for News Release \(PDF\)](#)

[BACK TO TOP](#)

There is no doubt that after 35 years as a professional musician Martin is, right now, better than ever. Widely acknowledged as one of the finest acoustic and slide guitar players in the world, his interpretations of traditional songs are masterpieces of storytelling. His solo shows are intense, eclectic, spellbinding and deeply moving.

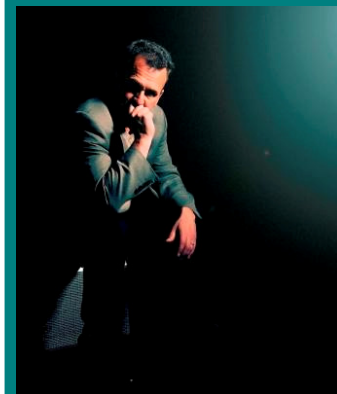
There is no-one who has more successfully combined the diverse elements of British, Afro- American and old-timey music than Simpson. His 15 years living in the US were well spent. In addition his own songwriting he has produced some real gems, from the truck-stop epic, "Love Never Dies" to the profoundly moving "Never Any Good".

His career includes collaborations on stage and record with June Tabor, Kelly Joe Phelps, Jackson Browne, Danú, Martin Carthy, Cara Dillon, David Lindley, Roy Bailey, Martin Taylor, David Hidalgo, Steve Miller, Dick Gaughan and many more.

Simpson is a very regular nominee in the BBC Folk Awards having received Musician of the Year in 2002 and 2005, album of the year in 2002 and, most recently, Best Traditional Track in the 2010 awards (in which he received an unprecedented 6 nominations in 5 of the categories).

Whether playing American old-time music, blues, a Dylan song or his own material, Martin Simpson is unpredictable, individual and a guitarist of immense subtlety.

*Although it's his guitar virtuosity that's frequently lauded, it's as an interpreter of song that Martin Simpson really scores. Simpson delivers narratives with colour and conviction. Fittingly be-gonged several times at the BBC Radio 2 Folk Awards, Martin Simpson is taking his place, not just as a hero for guitar-besotted acolytes but as one of the national treasures of English traditional music." BBC Radio 2*



Martin Simpson



Emily Slade

**Monday  
26 April 2010  
8pm**

## Emily Smith

at **The Ravenswood  
Sharpthorne**

[www.theravenswood.co.uk](http://www.theravenswood.co.uk)

Support tbc

**£11 advance only  
(FREE IF ATTENDING  
DAVE SWARBRICK ON 8  
MARCH – see above)**

[Buy online via Acoustic  
Sussex website](#)



or 'book now, pay later'  
on 01342 714810

[BACK TO TOP](#)

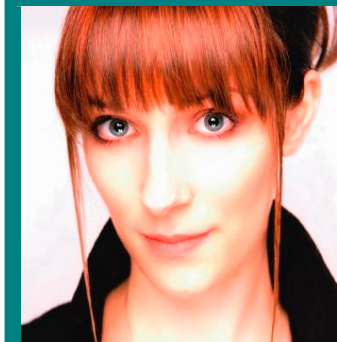
Scots Singer of the Year 2008/9 Emily Smith has firmly established herself as a leading light in the folk scene. Since winning the 2002 BBC Young Traditional Musician of the Year Award, she has now released four critically acclaimed albums, toured extensively with her band on the international folk circuit and is recognised not only as one of Scotland's finest interpreters of traditional song but also as a talented songwriter and multi-instrumentalist.

Her songwriting has not gone without recognition – She became the first ever winner from Scotland in the USA Songwriting Competition in 2005 after winning the folk section with her song 'Edward of Morton', another of her songs 'Always a Smile,' about the life of her Polish grandmother, was short listed in the final ten.

Alongside her solo career Smith has written, recorded and toured with artists from the folk scene and beyond including Eddi Reader, Beth Nielsen Chapman, Karine Polwart, John McCusker, David Scott and Phil Cunningham. She also appeared on the most recent series of BBC's Transatlantic Sessions (Series 4).

*"As far as I'm concerned she can walk on water" Mike Harding, Radio 2  
"Smith could become to Scottish folk what Joni Mitchell is to its Californian cousin" Q Magazine*

*"Smith deserves to become yet another new folk celebrity" The Guardian*



Emily Smith



Watch Emily Smith performing with the Darwin Song Project

Don't forget that as well as our own shows, the Acoustic Sussex website has a [Regional Gig Guide](#) and [links](#) to venues and clubs in the South East that offer folk, roots and acoustic music – and our [MySpace](#) site contains over 500 links to a variety of other MySpace 'friends' sites, including musicians, venues, magazines and lots more.



Regional Gig Guide

## For your future diaries...



[BACK TO TOP](#)



Acoustic Sussex is grateful for the funding support provided in 2009 by the [PRS for Music Foundation](#)

Future 2010 dates in the Acoustic Sussex programme include:

- 16 September – [Show of Hands](#) + [Ella Edmondson](#)
- October (date tbc) [Thea Gilmore](#)

More information can be found on our website: [www.acousticsussex.org.uk](http://www.acousticsussex.org.uk). You can also find us on MySpace (with samples from some of the artists appearing) at: [www.myspace.com/acousticsussex](http://www.myspace.com/acousticsussex). If you know anyone who you think may enjoy our events, please forward this email to them.



*If you know anyone who you think may enjoy our events, please forward this email to them. Many thanks*

**UNSUBSCRIBE**

*If you do not wish to be on this mailing list, please reply to this email, ensuring you include your name in the email and the word 'unsubscribe' in the heading.*

*Thank you.*